



Final Exam Programming

(Level 100)

BCE Students
Time Allowed: 2 hrs.
Level 0 Students.
Total Marks: 50
2014 – 2015

Solve the following Questions:

- يسمح باستخدام القلم الرصاص (شرط وضوح الخط).
- الامتحان في ورقتين.

- (1) Write a program to enter the student degrees in 10 subjects, then print his grade according to the following table, use if...else if (the maximum degree for each subject is 100)

Percentage	Grade
$50 > \text{per}$	Fail
$50 \leq \text{per} < 65$	Pass
$65 \leq \text{per} < 75$	Good
$75 \leq \text{per} < 85$	Very Good
$\text{per} \geq 85$	Excellent

- (2) A company has three types of workers. Write a program to enter the worker type and his work hours, then print his salary according to the following table:

Worker Type	<input type="text"/>
Work Hours	<input type="text"/>
Salary	<input type="text"/>
<input type="button" value="Calculate Salary"/>	
<input type="button" value="Clear"/>	<input type="button" value="Close"/>

Type	Hour price	Over	Tax
1	6 \$	300 \$	8%
2 or 3	4 \$	200 \$	6%
4	2 \$	100 \$	3%

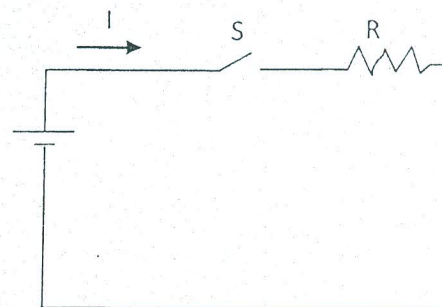
- (3) Write a program to enter the TV size and its price, then calculate its final price according to the following table and using the shown form, use select case.

TV Size	<input type="text"/>
Price	<input type="text"/>
Final Price	<input type="text"/>
<input type="button" value="Calculate Final Price"/>	
<input type="button" value="Clear"/>	<input type="button" value="Close"/>

Size	Discount	Transportation cost
$5 \geq \text{Size}$	No Discount	10 \$
$5 < \text{Size} \leq 10$	5%	20 \$
$10 < \text{Size} \leq 20$	7%	25 \$
$20 < \text{size}$	10%	30 \$

قلب الصفحة

- (4) Write a program to enter the voltage (V), the state of the switch (S), and the resistor (R). then calculate the output current (I) according to the state of the switch (S). use if Else.

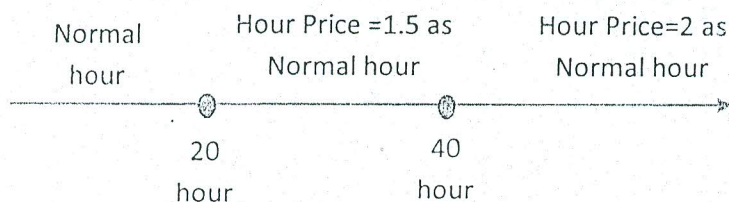


- (5) Using VB.Net, write the code for the following digital clock.

5 : 23 : 52

Start
Stop
Close

- (6) Write a program to enter the work hours and hour price, then calculate the worker salary. Use the following figure to modify the hour price according to the number of work hours.



- (7) Write a program for the following simple calculator.

First Number

Second Number

Result

+
-
*
/

Clear
Close

- (8) Write a program for the following unit converter.

Cm

Inches

Foot

Meter

Convert
Clear
Close

----- End Of Questions -----

With Best Wishes
Dr. Ahmed Saleh

PLZ, send your opinion about the exam to:
aisaleh@yahoo.com